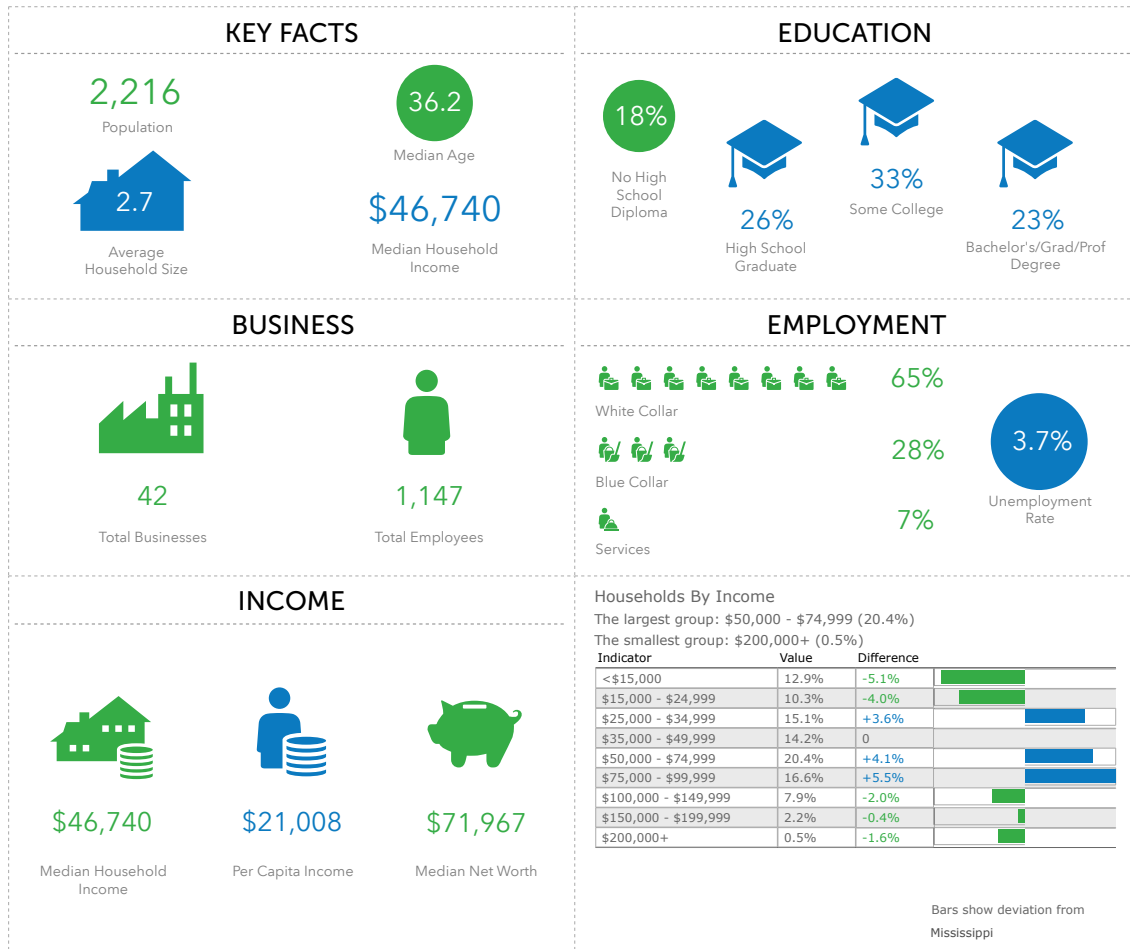


GUNTOWN

2018 KEY FACTS

Mayor Bud Herring
 Guntown City Hall
 P.O. Box 27
 Guntown, MS 38849
 mayor@guntown.org
 662-348-5353



RETAIL TRADE AREA

7 Mile Radius

- Population: 9,518
- Households: 3,635
- Housing Units: 3,893
- Total Employees: 2,374
- Total Businesses: 407
- Median HH Income: \$39,461

10 Mile Radius

- Population: 29,160
- Households: 11,253
- Housing Units: 12,139
- Total Employees: 7,858
- Total Businesses: 1,243
- Median HH Income: \$40,262

Average Daily Traffic

- U.S. 45: ADC of 23,000
- MS 145: ADC of 3,000
- MS 348 West: ADC of 4,300

The success of your business is important. The City of Guntown, in partnership with the Community Development Foundation, is committed to helping you locate the most appropriate site for your retail business and for its future success.

Guntown is located approximately twelve miles north of Tupelo, the major employment and retail destination of northeast Mississippi.

Located at the junction of Highway 370 and Highway 45, thousands of commuters traveling into and out of Lee County pass through Guntown each day. Guntown provides housing for nearby employment centers, and has experienced rapid residential growth over the past fifteen years.



SOURCE: ESRI Community Analyst