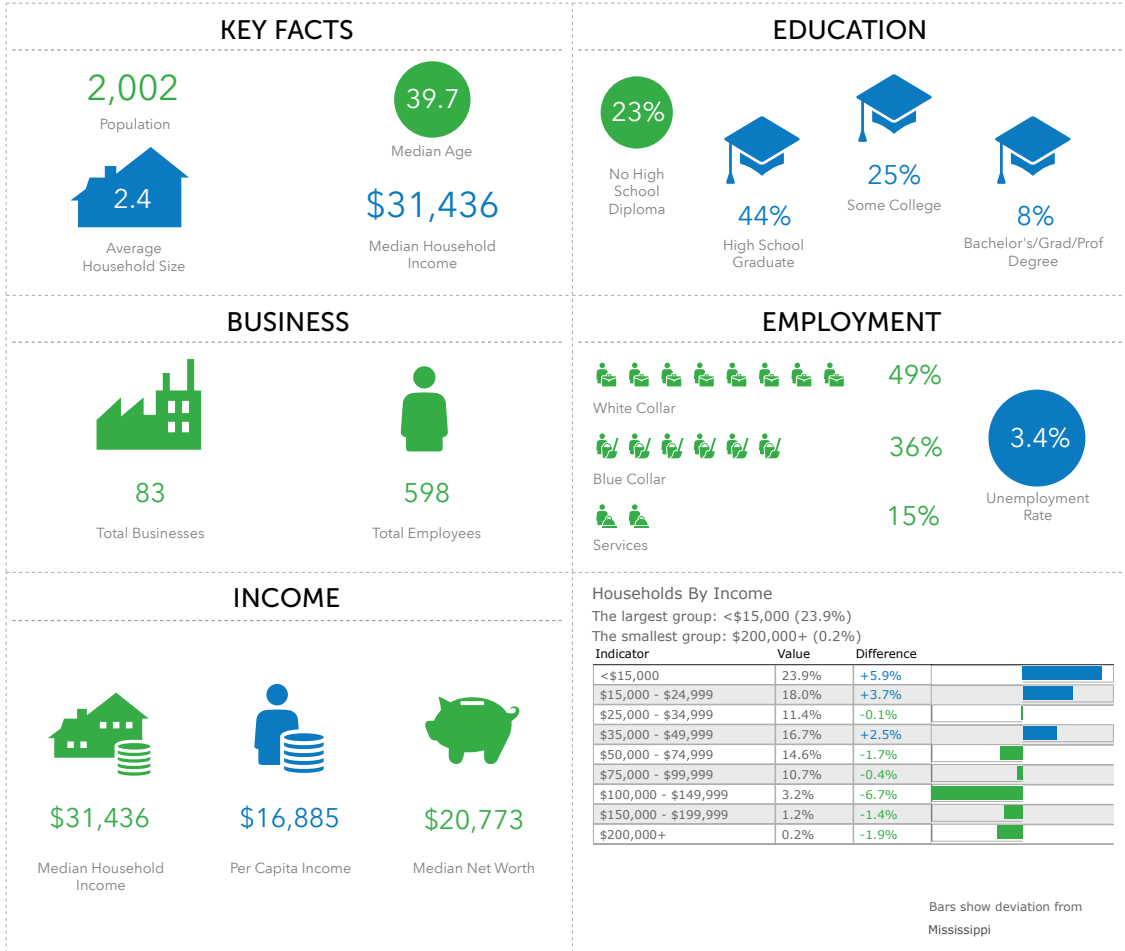


NETTLETON

2018 KEY FACTS

Mayor Mem Riley
 Nettleton City Hall
 124 Short Avenue, Nettleton, MS 38858
 662-322-1676 cell || 662-963-3060 office
 www.nettletonms.us



RETAIL TRADE AREA

7 Mile Radius

- Population: 6,993
- Households: 2,708
- Housing Units: 3,043
- Total Employees: 1,678
- Total Businesses: 161
- Median HH Income: \$36,500
- Average HH Income: \$44,851

10 Mile Radius

- Population: 26,498
- Households: 10,249
- Housing Units: 11,515
- Total Employees: 9,920
- Total Businesses: 767
- Median HH Income: \$34,973
- Average HH Income: \$44,916

Average Daily Traffic

- U.S. Hwy 45: ADC 15,000
- MS Hwy 6: ADC of 3,200
- State Hwy 145: ADC 3,900
- W. Main St: ADC of 6,000
- E. Main St: ADC of 4,100

The success of your business is our key concern. The City of Nettleton, in partnership with the Community Development Foundation, is committed to helping you locate the most appropriate site for your retail business and for its future success.

Nettleton is located approximately 15 miles south of Tupelo, the major employment and retail destination of Northeast Mississippi.

This key area is ripe with opportunity. It currently benefits from thousands of weekday and weekend drivers passing along U.S. Highway 45, as well as the Mississippi Highway 145 and Highway 6 employment corridors.

