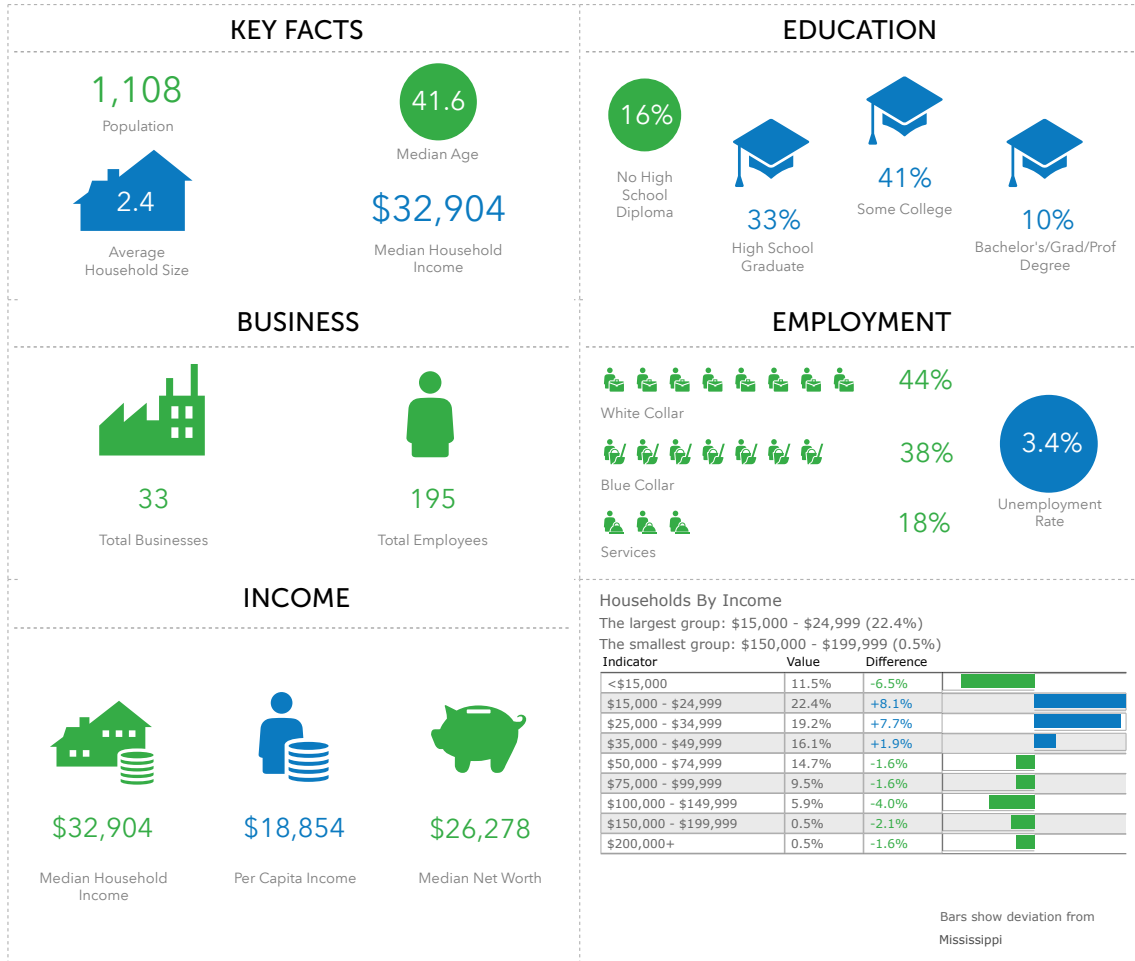


PLANTERSVILLE

2018 KEY FACTS

Mayor Shelton Shannon
 Plantersville Town Hall
 P.O. Box 507
 Plantersville, Mississippi 38862
 mayorshelton@gmail.com
 (662) 844-2012 || plantersvillems.com



RETAIL TRADE AREA

7 Mile Radius

- Population: 45,553
- Households: 17,783
- Housing Units: 20,177
- Total Employees: 30,980
- Total Businesses: 3,681
- Median HH Income: \$37,268

10 Mile Radius

- Population: 70,132
- Households: 27,388
- Housing Units: 30,923
- Total Employees: 41,747
- Total Businesses: 5,145
- Median HH Income: \$40,529

Average Daily Traffic

- MS 6 N: ADC of 6,500
- MS 6 S: ADC of 4,900
- Central St: ADC of 2,000

SOURCE: ESRI Community Analyst



The success of your business is important. The Town of Plantersville, in partnership with the Community Development Foundation, is committed to helping you locate the most appropriate site for your retail business and for its future success.

Due to the Town's good housing opportunities, many employees of North Mississippi Medical Center (NMMC) reside in Plantersville. At only a 10-minute drive away (4.5 miles), the Tupelo-based NMMC is a regional medical facility with 650 beds and serves more than 700,000 people annually.

Plantersville is located just eight miles from the Barnes Crossing Shopping District, the major shopping venue of Northeast Mississippi, as well as four miles from Downtown Tupelo.