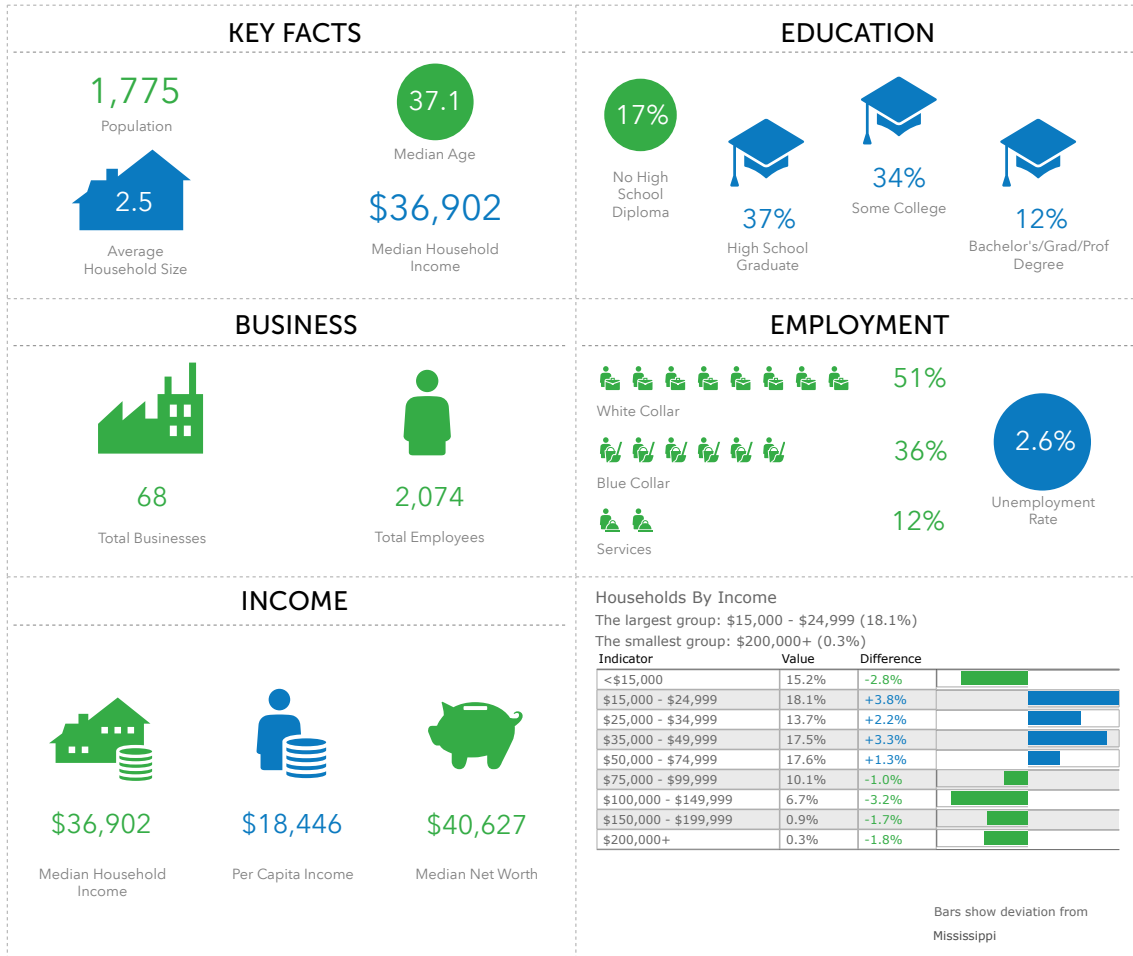


# SHANNON

## 2018 KEY FACTS

Mayor Ronnie Hallmark  
 Shannon Town Hall  
 P.O. Box 6, Shannon, Mississippi 38868  
 townofshannon@hotmail.com  
 (662) 767-9747 || www.townofshannon.org



### RETAIL TRADE AREA

#### 7 Mile Radius

- Population: 18,852
- Households: 7,012
- Housing Units: 7,835
- Total Employees: 6,455
- Total Businesses: 752
- Median HH Income: \$34,285
- Average HH Income: \$43,370

#### 10 Mile Radius

- Population: 44,187
- Households: 16,799
- Housing Units: 18,949
- Total Employees: 26,973
- Total Businesses: 3,372
- Median HH Income: \$35,087
- Average HH Income: \$46,392

#### Average Daily Traffic

- U.S. 45: ADC of 21,000
- MS 145: ADC of 12,000
- U.S. 45 Alt: ADC of 10,000

The success of your business is our key concern. The Town of Shannon, in partnership with the Community Development Foundation, is committed to helping you locate the most appropriate site for your retail business and for its future success.

Shannon is located approximately 6 miles south of Tupelo, the major employment and retail destination of northeast Mississippi.

This key intersection represents an underutilized opportunity. It currently benefits from thousands of weekday and weekend drivers passing along U.S. Highways 45 and Alternate 45, as well as the Mississippi Highway 145 corridor.



SOURCE: ESRI Community Analyst