

# CDF SELECT BLDG 6



## ABOUT

Introducing the CDF Select Building 6, the ultimate industrial property for businesses looking for a prime location in Lee County, Mississippi. With over 100,000 square feet of top-quality office, manufacturing, and warehouse space, this property is perfect for businesses of all sizes and industries.

Strategically located on TAB Way, the CDF Select Building 6 boasts excellent visibility and accessibility, making it the perfect location for companies looking to establish a strong presence in the area. The building sits on a beautifully landscaped 40-acre lot, providing ample parking space for employees and customers.

Inside, the CDF Select Building 6 is equipped with top-of-the-line amenities, including energy-efficient lighting systems, 30+-foot ceilings, and flexible floor plans to meet your unique business needs. With its modern design and high-end finishes, this property is sure to impress your clients and employees alike.

Contact us today to learn more about this exceptional property and to schedule a tour. Don't miss out on the opportunity to take your business to the next level.

## 100,000 SF

Site Size:	40.0 Acres
Dimensions:	250' x 400'
Expandable:	up to 500,000 SF
Column Spacing:	50' x 75'
Office:	Built-to-Needs
Dock Doors:	4 - 8' x 9'
Drive-In Doors:	1 -14' x 16'
Ceiling Height:	37' Peak 30' Eave
Floors:	6-inch Reinforced
Lighting:	LED



17 TAB Way  
Guntown, MS 38849

COORD.

34.476968, -88.664356



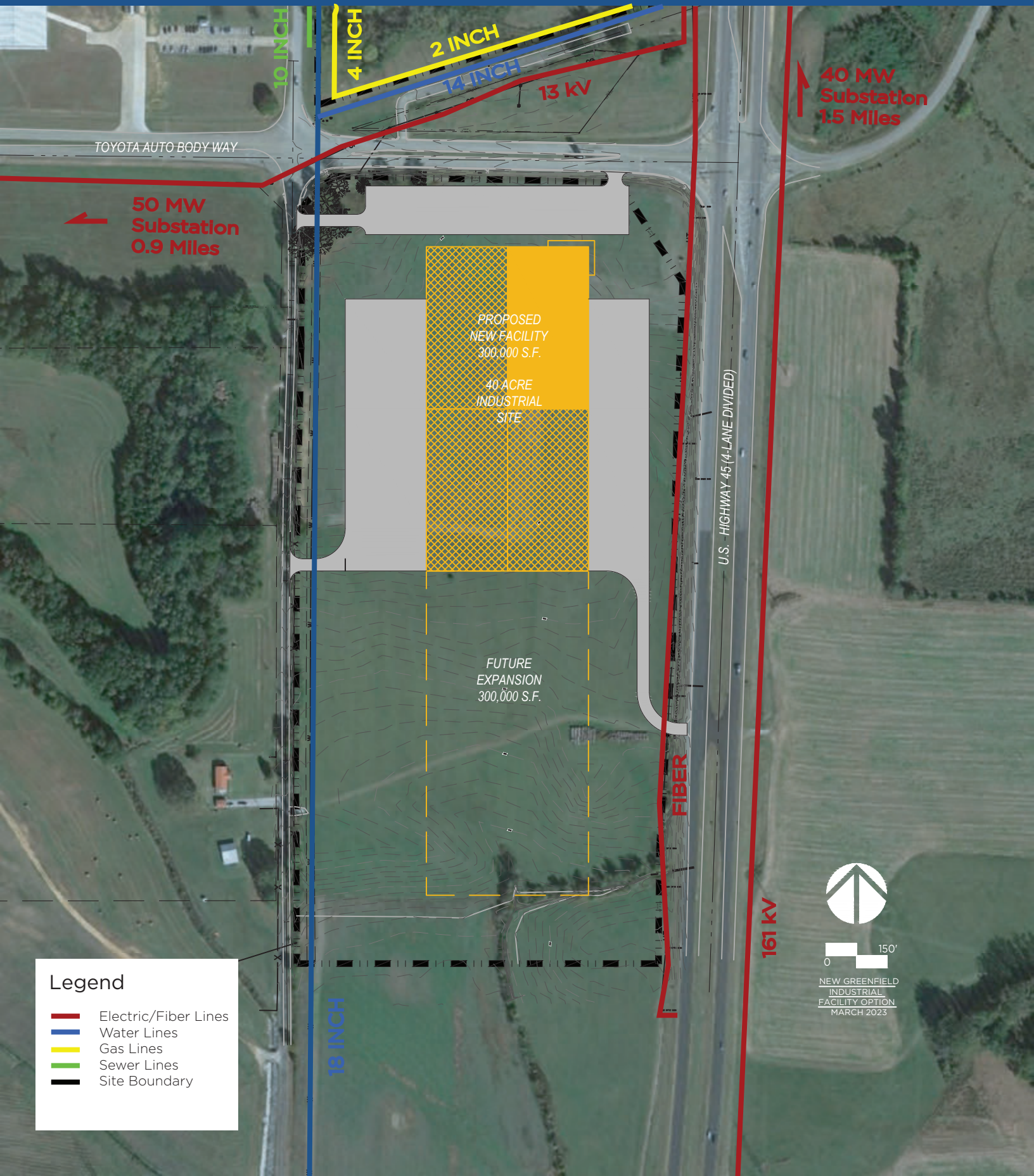
CDFMS.ORG  
662-842-4521















Note: For preliminary planning purposes only.

NOT TO SCALE

## ARCHITECTURAL VISUALIZATION

HARRY A. MARTIN NORTH LEE INDUSTRIAL COMPLEX - LOT F  
BALDWYN, LEE COUNTY, MISSISSIPPI



Created August 2024





Note: For preliminary planning purposes only.

NOT TO SCALE

## ARCHITECTURAL VISUALIZATION

HARRY A. MARTIN NORTH LEE INDUSTRIAL COMPLEX - LOT F  
BALDWYN, LEE COUNTY, MISSISSIPPI



Created August 2024





Note: For preliminary planning purposes only.

NOT TO SCALE

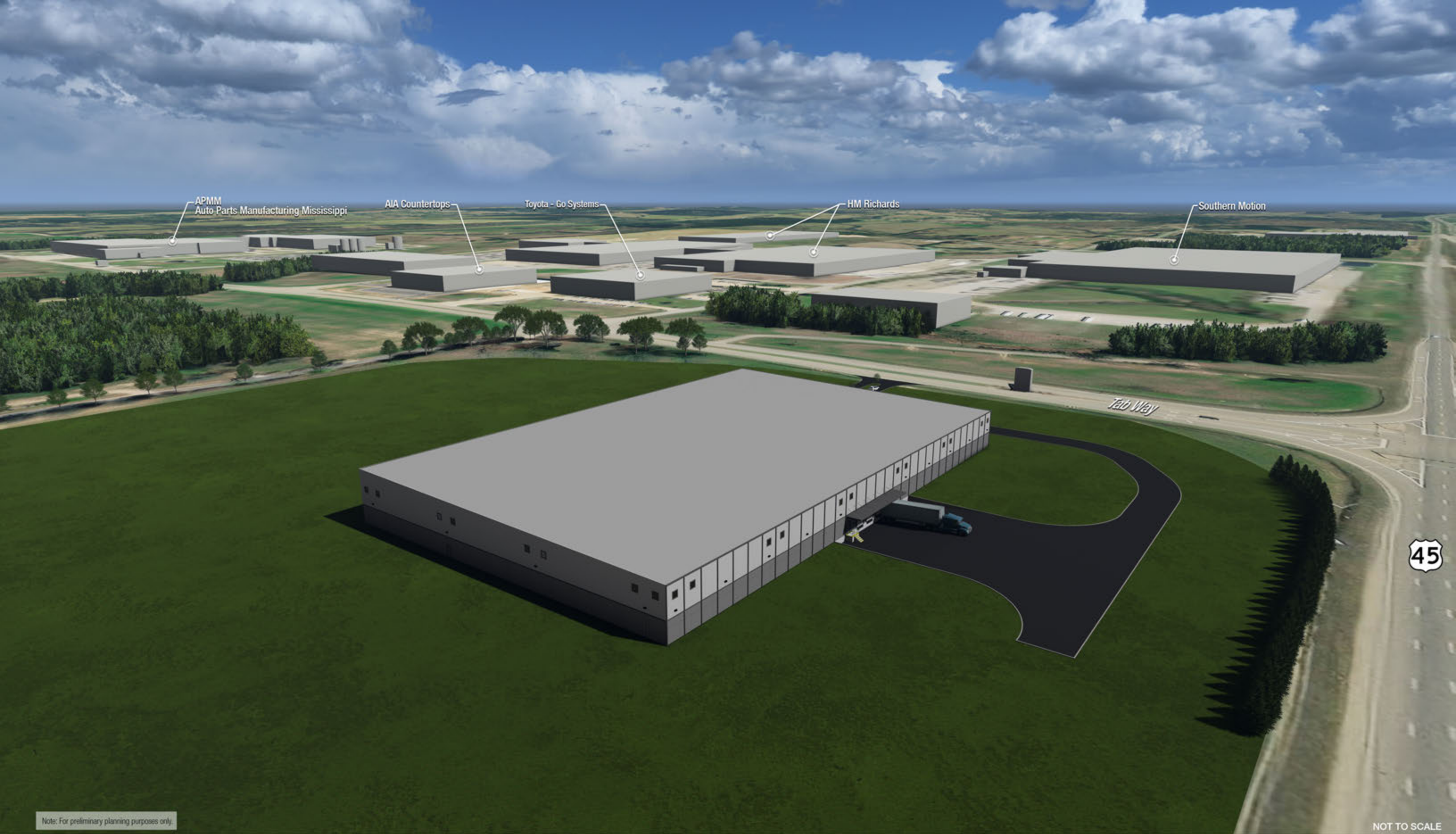
## ARCHITECTURAL VISUALIZATION

HARRY A. MARTIN NORTH LEE INDUSTRIAL COMPLEX - LOT F  
BALDWYN, LEE COUNTY, MISSISSIPPI



Created August 2024





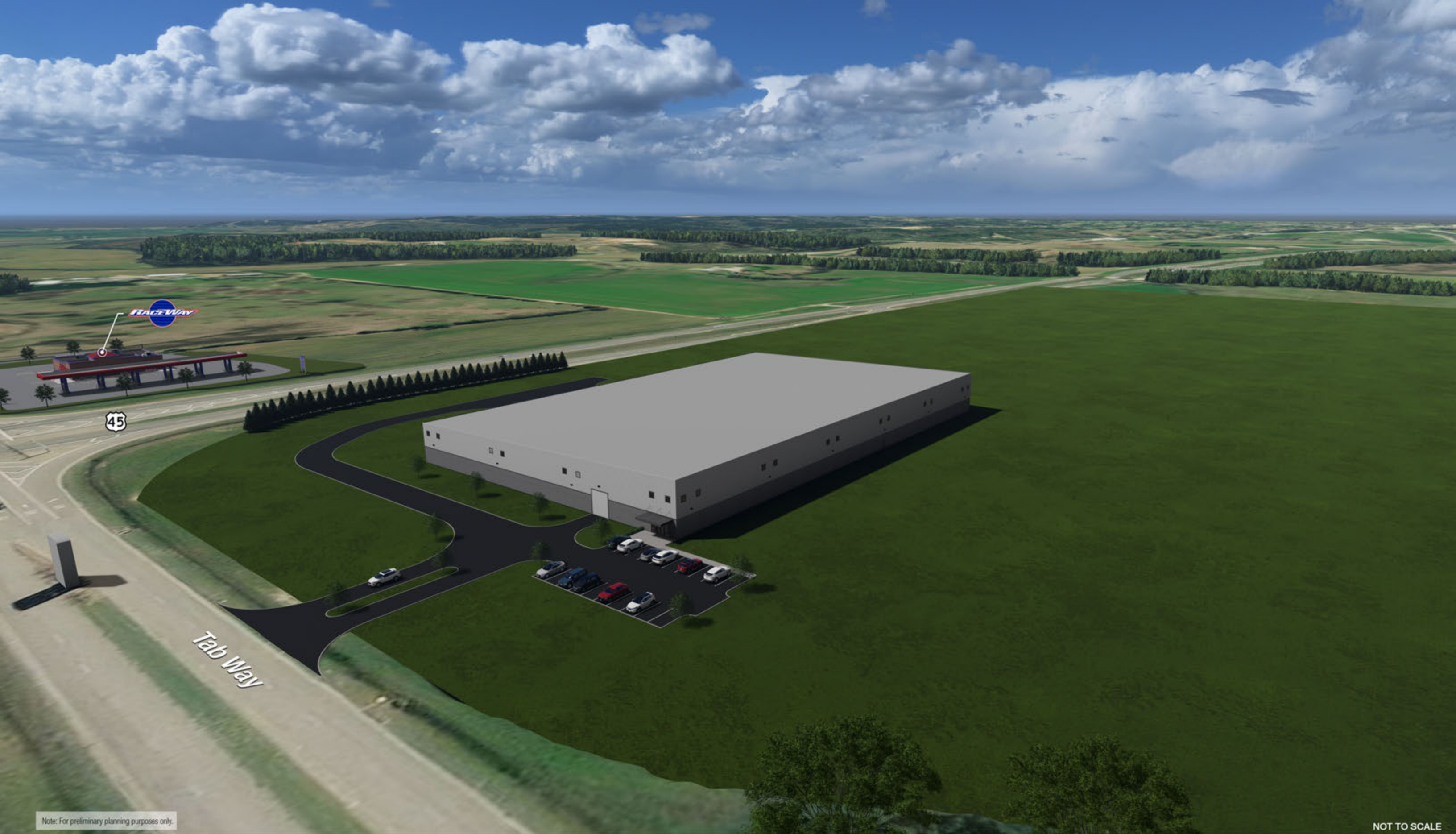
## ARCHITECTURAL VISUALIZATION

HARRY A. MARTIN NORTH LEE INDUSTRIAL COMPLEX - LOT F  
BALDWYN, LEE COUNTY, MISSISSIPPI



Created August 2024





Note: For preliminary planning purposes only.

NOT TO SCALE

## ARCHITECTURAL VISUALIZATION

HARRY A. MARTIN NORTH LEE INDUSTRIAL COMPLEX - LOT F  
BALDWYN, LEE COUNTY, MISSISSIPPI



Created August 2024